

efficient. sustainable. smart.

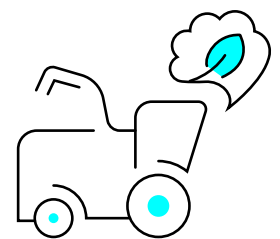
INFOGRAPHIC

Electromechanical Actuator (EMA)

GREEN PRODUCTIVITY WITH EMA

INCREASED EFFICIENCY & SUSTAINABILITY

- Higher productivity through more precise control
- Realization of assistance systems
- Almost hysteresis-free repeatability
- CO₂ reduction through fuel savings

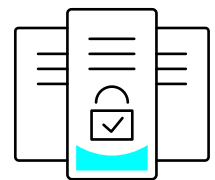


SMART CUSTOMIZATION

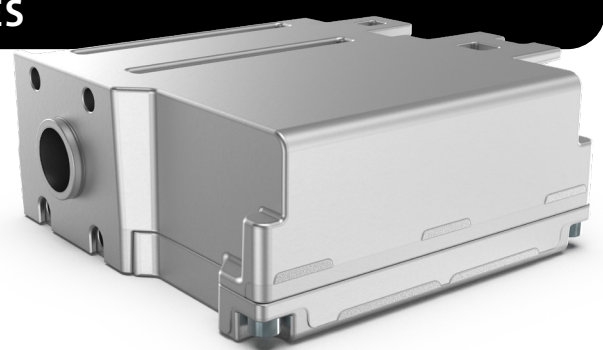
- Simple commissioning through TSC (Thomas Software Control)
- Individual adaptation to the hydraulic system (or to the application)

PRODUCT SOLUTION FOR HIGHEST SAFETY REQUIREMENTS

- Certification according to Functional Safety Performance Level possible
- Extensive diagnostic possibilities due to digital control



ADDED VALUES



+ Reduced engineering effort due to less components and easier routing through the machine

+ Space saving in application

+ Reduced possibility of leakage

+ Less oil contamination risk

+ Limited noise due to missing sound source and less vibrations

+ Less maintenance/repair – optimized TCO

+ Limited thermal energy loss

+ Less mass – less weight

More about the EMA?



MIRCO REIF
 Director Market & Product Management Off Highway Solutions
 mirco.reif@thomas-magnete.com